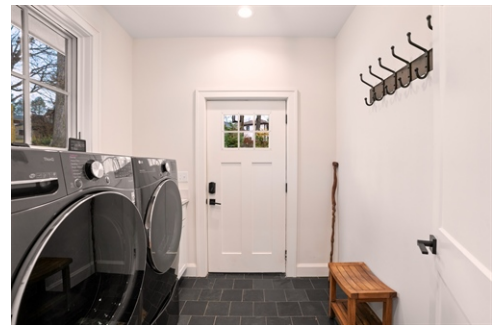


Historic Kenilworth



\$ 849,000



23 Caledonia Road, Asheville, NC 28803

- » Beds: 4 | Baths: 2 Full, 1 Half
- » MLS #: 4095072
- » Single Family | 2,448 ft² | Lot: 6,534 ft²
- » Modern farmhouse with classic and contemporary elegance
- » Gourmet kitchen with Viking stainless steel appliances
- » More Info: 23CaledoniaRoad.com



LeNoir Medlock
(828) 258-2953 (office)
(828) 691-9981 (cell)
lenoirm@preferredprop.com
<http://www.PreferredProp.com>



Preferred Properties Of Asheville
39 Woodfin Street
Asheville, NC 28801
(828) 258-2953

Nestled in the heart of Asheville's historic Kenilworth neighborhood, this modern 2019 farmhouse blends classic charm w/ contemporary elegance. Boasting 4 bedrooms and 2.5 baths, the residence exudes sophistication and comfort. The gourmet kitchen is a culinary enthusiast's dream, equipped w/ top-of-the-line Viking stainless steel appliances. Tons of natural light illuminate the open living spaces and the primary suite is conveniently located on the main floor. The entire home is intelligently wired, w/ fiber internet and smart home capabilities, including Nest and Alexa integration for seamless control. Solid interior doors, Hunter Douglas shades, energy-efficient windows and solid surface countertops lend a sense of quality and durability, enhancing the overall aesthetic. The Kenilworth neighborhood has 4 parks within walking distance Residents can soak in the historic charm of the surrounding area and enjoy the conveniences of a Biltmore Village, downtown and vibrant east Asheville.

